

MOROKS

DECEMBER 2013

Monrovia Rockhounds Newsletter

P.O. Box 553

Monrovia, CA 91017

Editor – Janie Duncan



MOROKS NEWSLETTER DECEMBER 2013

SUN	MON	TUE	WED	THU	FRI	SAT
1	2	3	4	5 MOROKS BOARD MTG. 2:15 @ JANIE'S	6	7
8	9	10	11	12	13	14
15	16	17	18	19 Christmas Party @ Max's 6:00 pm	20	21
22	23	24	25 MERRY CHRISTMAS	26	27	28
29	30	31	HAPPY NEW YEAR			

MOROKS DECEMBER 2013 NEWSLETTER



MONROVIA ROCKHOUNDS

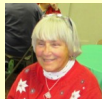


Our Website is www.moroks.com

ELECTED OFFICERS



PRESIDENT – Janie Duncan (626) 358-8157



VICE PRESIDENT – Camille Rutkowski (626) 289-2621



SECRETARY – Michele Silcock (626) 357 8425



TREASURER – Jim Lloyd (626) 793-9239



AUDITOR – Louise Stack (626) 966 0350

CHAIRPERSONS

REPRESENTATIVE – Ray Ritchey (626) 359-1624

REPRESENTATIVE – Cal Matthews (626) 798 7481

FEDERATION – Jo Anna Ritchey (626) 359-1624

HISTORIAN – Nancy Hamrick (626) 357-4106

BULLETIN – Janie Duncan (626) 358-8157

CUSTODIAN – Jim Lloyd (626) 793-9239

PICNIC – Donald Sneberger (626) 941-6214

SHOW – Rudy Lopez (626) 993-7989

WEBSITE – Jo Anna Ritchey (626) 359-1624

ROCK RAFFLE - Louise Stack (626) 966-0350

FIELD TRIP – Ray Ritchey (626) 359-1624

PHOTO – Donald Sneberger (626) 941-6214

FELLOWSHIP/cards – Louise Stack (626) 966-0350

Mission Statement : Our Purpose is to promote popular interest and education in the earth sciences, including geology, mineralogy, paleontology, the lapidary arts, and related subjects; to sponsor and provide means of coordinating the work and efforts of persons and groups with similar interests; and by and through such means to strive toward greater community and international good will and fellowship. We also support promoting and ensuring the right of amateur hobby collecting, recreational rock hunting and the use of public and private lands for educational and recreational purposes related to the earth sciences. We are a registered 501 C 3 non profit organization.

Affiliations & Accreditations: The Monrovia Rockhounds is affiliated with the California Federation of Mineralogical Societies, Inc. (CFMS), the American Federation of Mineralogical Societies (AFMS), and the American Lands Access Association (ALAA).

Membership: Annual donations are \$15.00 per member and \$5.00 per each additional member at the same address. \$10.00 per name badge is payable on the date of initiation.

Meetings: MOROKS meetings are held on the 3rd Thursday of each month. At 7:00 pm, in the basement of the United Methodist Church of Monrovia, located at 140 E. Palm Ave. Monrovia CA 91016. The building is on the corner of Ivy & Palm Ave. We use the door where there is handicapped access in the alley on the west side of the building. Do not try to enter from the front of the building. Guests are always welcome at our General Meetings. Please come and share our love of rocks.

Information: Monrovia Rock Hounds Inc. was founded August 28th, 1957. The club colors are green & white. The club is a non-profit organization dedicated to providing knowledge of the lapidary arts, geology, mineralogy, and other related fields. Members enjoy slide shows, lectures, demonstrations, displays, lapidary classes, our club library as well as field trips for exploration, study and collecting specimens.

We reserve the right to edit all material submitted for publication.

If you have any submissions for this newsletter or need to contact the editor Janie Duncan please email her at janieduncan@altrionet.com

**Monrovia
Rockhounds
December
Birthdays**

Norma MacFarland

Veronica Rameriz

Michael Vannatta

**happy
Birthday**



CO-OP FIELDTRIPS

JAN 18: Quartzsite for the QIA Pow Wow



Pamela Osburn, our new member, when she served in the US Army in Vietnam.

Shop Hints via SARM

Nails of any size can be used as dopping sticks for cabs up to 18x25mm Common or box nails of up to 2 penny size can be used, Select a size appropriate to the size of the cab to be s Even finish nails can be used for very small cabs . Preheat the cabs under a 75 watt light bulb, and with an alcohol lamp and a stick of dop wax. Soften the wax and work a small amount onto the nail head While the wax is soft,. press the nail with the wax to the base of the cab. Only a few drops of wax are needed to hold the stone securely.

A potato peeler will follow the curve of the cabochon and remove the excess dop wax better than a knife.

To clean the outside of abalone shells, use one teacup full of household bleach to a gallon of water, grease the inside of the shell with vaseline to prevent it from burning. Soak the shell in the bleach mix for two weeks.

Make your own odd-shaped templates from plastic lids from coffee cans. Cut off lip so a flat piece remains. Lay out the desired shapes on the plastic and with a sharp knife, cut around the shape. This template is oil and water resistant and after using. can be filed for further reference

PREZ SEZ



I just I can not believe it is Christmastime already. I am looking forward to our Christmas Party at Max's Mexican. Remember that is starts at 6:00 pm and to bring an \$10 wrapped exchange gift. A reminder that our show is coming up fast folks. We need lots of donation for our new silent auction and now is the time to set aside items for it! *Janie Duncan*

VICE PREZ SEZ



The Christmas Party is the program for December. Please come and join the fun and if you invite a guest please bring an extra gift if you want them to be included in the gift exchange gamer. *Camille Rutkowski*

November 7th***MONROVIA ROCKHOUNDS BOARD MEETING***

President: *Janie Duncan* called the meeting to order at 2:15 PM.

Vice President: *Camille Rutkowski* absent November will be a program on California Lapis Lazuli by Patrick Keegan. December is our Christmas Party at Max's Mexican. 6pm Huntington Dr. Across from Sonic E of Mountain Ave.

Secretary: *Michele Silcock* The minutes were approved as written in the bulletin.

Representative: *Ray Ritchey* was absent **Representative:** *Cal Matthews* was absent

Treasurer: Jim Lloyd. We have 42 paid members.

Auditor: *Louise Stack* will get the files from Jim at the general meeting.

Website: *Jo Anna Ritchey* no report. It is up to date.

Federation: *Jo Anna Ritchey* Janie reported Pasadena club plans to host the 2014 CFMS Show.& Convention at the Pomona fairground building 5 by the Sheraton Hotel May 30-June 1 Janie has been asked to do a children's table. They will need lots of volunteers. Jo Anna plans to attend the CFMS fall meeting this week. Report in this newsletter.

Fellowship: *Louise Stack* Ray Ritchey will have cataract surgery soon. Michele had a knee replacement and is doing well. Em Matthews will have hers in December.

Photographer: Donald Sneberger no report.

Field trip: *Ray Ritchey* absent. Rudy will plan one to San Pedro for agates. Jewel Tunnel is on November 23rd 10-4

Rock of the Month Talk: No report.

Bulletin: *Janie Duncan* made a mistake and printed the wrong issue of the hard copy and has to re print it. Sorry!

Historian: *Nancy Hamrick* was absent **Picnic:** *Donald Sneberger* no report.

Great Rock Drawing: *Louise Stack* Howlite for November.

Custodian: *Jim Lloyd* will meet with the new owners and sign a new agreement for rental of the garage.

Refreshments: Janie Nancy and Colleen will do November.

Show: *Rudy Lopez* We need donations of gift cards, jewelry, good rocks and items for the lunch. Please take forms to pass out to stores. Rudy plans to make the grab bags and is getting the tumbled stone from Jim in the garage. Rudy will have tickets at the October meeting to sell. Janie needs to mail show flyers to the local clubs in November. Jo Anna is working on getting insurance and have beer sent flyers to all the vendors. Rudy has 120 grab bags done.

Old Business: *Janie Duncan*

New Business: *Janie Duncan* 1. Camille Rutkowski has volunteered to be chairman of the 2014 nominating committee. The proposed slate of officers is the same as last year. If you wasn't to nominate someone ir run for office with their permission please see Camille. 2. Louise Stack has volunteered to help Janie do a kids booth for the CFMS Show. PRESIDENT – Janie Duncan VICE PRESIDENT – Camille Rutkowski SECRETARY – Michele Silcock TREASURER – Jim Lloyd AUDITOR – Louise Stack 3. There is a Suiseki Show at the Huntington Library soon. See the ad in this newsletter.

Janie Duncan Adjourned the meeting at 3:10 pm



Bench Tips by Brad Smith More BenchTips by Brad Smith are at FaceBook [facbook.com/BenchTips](https://www.facebook.com/BenchTips) or at groups.yahoo.com/group/

JUST SAY NO TO OPTIVISORS

During his annual vision-check, a jeweler friend of mine wondered why not have his reading glasses made with bifo- cals that would magnify the same as the Optivisors? So he asked the ophthalmologist if he could add around +2.00 diopters into bifocals. The doctor checked with his supervisor and came back all excited. They all agreed that it was a great idea and even gave him a special device to measure how far he holds a jewelry piece from his eye, to get the focal distance exactly right. So if all goes well, no more sweaty, bulky optivisors! Anyone else tried this?

November 21st**MONROVIA ROCKHOUNDS GENERAL MEETING**

President: *Janie Duncan* called the meeting to order at 7:04 PM.

Vice President: *Camille Rutkowski* Tonight program will be on California lapis lazuli by Patrick Keegan. He has stones to sell. December is our Christmas Party at Max's Mexican Restaurant and the gift exchange. January is a program on the gold camp claim Cerro Gordo.

Secretary: *Michele Silcock* The minutes were approved as printed in the bulletin.

Representative: *Ray Ritchey* has nothing new to report.

Representative: *Cal Matthews* was absent

Treasurer: *Jim Lloyd*. We have 42 paid members.

Auditor *Louise Stack*: will get the records from Jim tonight.

Website: *Jo Anna Ritchey* said it is all current.

Federation: *Jo Anna Ritchey* absent. Janie reported Pasadena club is hosting the 2014 CFMS Show.& convention at the Pomona fairground Building 5 by the Sheraton Hotel May 30-June 1 Janie has been asked to do a children's table. They will need volunteers. Jo Anna's report is in this bulletin

Fellowship: *Louise Stack* 1 guest present George Mongar. Michele is waiting for a knee replacement. Em Matthews is waiting for her next hip replacement. Ray Ritchey is having cataract surgery soon.

Photographer: Donald Sneberger gave Janie the card.

Show: *Rudy Lopez* We need donations of gift cards, jewelry, good rocks and items for the lunch. Please take forms to pass out to stores. Rudy plans to make the grab bags and has 120 finished. He will get tumbled stone from Jim from the garage. Ray will make egg cartons. Rudy will have tickets at the next meeting to sell. Janie mailed show flyers to the local clubs. Jo Anna is working on getting insurance and has sent flyers to all the vendors. We will go with the \$300.00 flat rate to joint the LA County Arboretum Foundation plus insurance and 15% to the arboretum.

Field trip: *Ray Ritchey* Rudy is going to plan a day trip to San Pedro for agate. The CFMS has a trip over Thanksgiving holiday for anyone interested. It will be to Wiley Wells for geodes.

Rock of the Month Talk: We voted not to do it anymore.

Bulletin: *Janie Duncan* explained that she printed the wrong issue and had to reprint. Sorry

Historian: *Nancy Hamrick* was absent

Picnic: *Donald Sneberger* no report.

Great Rock Drawing: *Louise Stack* Jim brought new rocks for the drawing.

Custodian: *Jim Lloyd* We will get a new agreement with the new owners.

Refreshments: Janie and Colleen brought them tonight.

Old Business: *Janie Duncan*

New Business: *Janie Duncan*

1. Camille Rutkowski has volunteered to be chairman of the 2014 nominating committee. The proposed slate of officers is the same as last year. If you wasn't to nominate someone or run for office with their permission please see Camille Rutkowseski The proposed slat3e of of officers for 2014 is: Janie Duncan PRESIDENT Camille VICE PRESIDENT Michele Silcock SECRETARY – Jim Lloyd TREASURER – Louise Stack

AUDITOR

2. Louise Stack has volunteered to help Janie do a kids booth for the CFMS Show.

Janie Duncan Adjourned the meeting at 7:50 pm

December is out Christmas Party at Max's at 6:00pm



<http://www.amlands.org> for more information on what you can do to protect our rock sites.



MOROKS PICTURE PAGE By Donald Sneberger November CA Lapis Lazuli by Patrick Keegan



Patrick Keegan on Mt. Baldy



MONROVIA ROCKHOUNDS CHRISTMAS PARTY

December 19th 2013

DINNER 6:00 P.M

You pay for your own dinner. We will be in a private room.

Max's Mexican Cuisine

1101 E Huntington Drive Monrovia, CA 91016 Max 's (626) 303-3330

We will be having a gift exchange game. Please bring a gift of around \$10.00 in value. Wrap it and label it man or woman please. If you bring a guest and you want them to participate it is up to you bring a gift exchange gift for each guest. We would like the gifts to be rock related or something anyone would like.



Rock City near **Minneapolis**, Kansas is a tiny park which contains about 200 huge Dakota sandstone concretions. The spheres are up to 27 feet in diameter and you are encouraged to climb on them and do pretty much whatever you want. They claim that there is no place else in the world with so many huge concretions. Via <http://www.kansastravel.org/chalkkansas.html>



Castle Rock Badlands is about 12 miles south of I-70 between **Quinter** and **Collyer**, Kansas. The chalk formation is fragile and may not last many more years. The tallest spire fell following a thunderstorm in 2001. The badlands area just south of Castle Rock is even more interesting. Via <http://www.kansastravel.org/chalkkansas.html>

It's all in the Spelling CARAT - a standard unit of mass used for precious stones, especially diamonds, is equal to 200 milligrams. KARAT - a unit of proportion of gold in an alloy equal to 1 / 24 part of pure gold. CARET - a mark on printed or manuscript material to show where something such as a letter or word should be inserted. In the United States, the caret is usually made just under the line. Other cultures invert the caret and place it above the line. CARROT - Bugs Bunny's favorite food! via "EL Gambrisino"

Padparadscha The following article was downloaded from *The Natural Sapphire Company* website on September 01, 2012, URL: <<http://www.thenaturalsapphirecompany.com/Education2>>.

“Padparadscha sapphires are little known to the general public, but they are treasured by gemstone connoisseurs. The term “padparadscha” is derived from the Sinhalese word for an aquatic lotus blossom, which has an unusual salmon color. Many agree that padparadschas straddle the color boundary between pink and orange, yet after decades of debate, collectors, dealers, and gemologists cannot agree on a uniform standard for the padparadscha color range. Points of contention include how pink or how orange these sapphires can be, and whether certain tones are too dark to qualify. Some padparadscha sapphires are not evenly salmon colored, but rather zoned pink and yellow. Some experts insist that true padparadschas can come only from Sri Lanka, which, for centuries, was the only source of this coveted stone. We feel that the finest stones do in fact come from Sri Lanka, but Madagascar is now producing a major percentage of the stones available on the market. The stones from Madagascar are usually more pink than orange, and although they are classified as “padparadscha”, they are normally sold at a price that is about 20 percent less than the “Ceylon” padparadschas. The new sapphires from Madagascar are very beautiful and a welcome addition to the padparadscha supply. Clarity is an important element for padparadschas because their light tones reveal inclusions. Any sort of cloudiness will also dull a padparadscha sapphire’s delicate color. Nevertheless, padparadscha sapphires are so rare that consumers may have to sacrifice a preference for high clarity in order to obtain a stone with acceptable color. The extreme scarcity of padparadscha rough means that cut stones will be shaped to conserve as much material as possible. This also means that padparadschas may have unusual, asymmetrical cuts. A padparadscha sapphire with a more orange hue because of the high prices that these rare sapphires command, many treatments have been developed to create padparadscha-like color in sapphires. In the late 1990s, the world gem market experienced a sudden influx of padparadscha sapphires. Consumer enthusiasm turned to outrage when it was discovered that these stones had been colored by a radical new treatment method. When heated to extreme temperatures in the presence of beryllium, poorly colored pink sapphires can emerge with an exquisite pinkish orange to orangey pink “padparadscha” color. When a sapphire crystal is heated to near its melting point, small atoms of beryllium penetrate the crystal lattice and become trapped within. Unlike the titanium used to enhance blue sapphires, beryllium penetrates deep into the sapphire, making it extremely difficult to detect. Gemologists eventually developed reliable testing procedures for beryllium diffusion, but not before substantial numbers of beryllium treated pinkish orange to orangey pink sapphires had been sold as natural. Via Lapidarian



CAMP ZZZYX, March 30 – April 6, 2014 Join CFMS at the Earth Science Seminar be held at Soda Springs (Zzyzx) located approximately 50 miles northeast of Barstow, CA. Off I-15 at Zzyzx Rd. Facilities are rustic, dormitory style rooms with bed, mattress & desk. Cleaning is the occupant's responsibility. You must bring bed linen or sleeping bag, and any creature comforts you may desire i.e. lamp, throw rug, ice chest. RV parking is approximately 1/4 mile from the Center and has no facilities of any kind. All restrooms and showers are in separate buildings at the center and are communal. The Earth Science Committee retains the right to accept or deny applications as they deem appropriate. This area is designated by the Government as a Desert Studies Center; consequently, NO PETS ARE ALLOWED. A limited number of reservations are available and an early application is recommended. Subject to change these classes will be offered: Lapidary, Beading, Wire Art, Field Trips, Silver Fabrication, Advanced Wire Art, Precious Metal Clay, Soft Stone Carving & Scrimshaw, Faceting, and Alternative Casting. The fee for the week is \$390.00 per person and includes quarters or RV space, three meals per day, and classes. Additional charges may be assessed for material furnished by instructors. NO CANCELLATIONS AFTER MARCH 1, 2014 unless a replacement is provided. A \$25.00 Administration Fee will be assessed for cancellations prior to March 17, 2014.

CFMS Board Meeting, Visalia 11/8-11/10/2013

Keith Olivas, a vendor, spoke to us on Friday evening at the Cracker Barrel. He was saying that we needed to more in the way of advertising. He recommended Jay Conrad Levinson's book *Guerilla Advertising*. That opened up a general discussion about how to increase attendance at our Shows. Many said that by reaching out to children and getting schools to attend the Show really increased their attendance. One club worked with the Boy Scouts to have them complete a merit badge at the Show. The idea is that kids will bring their parents to the Show. Turlock has done many of these ideas and in 2013 they had 4,682 adults and 3,200 kids.

On Saturday I attended the Board of Directors Meeting. The CFMS pays the subscription to *Diamond Dan*. Editors and others in the club can use up to 6 pages for free each month for club related publications. The subscription was renewed for another 2 years.

The 2014 CFMS Show will be held in Pomona on 5/30-6/1/2014 and we will have the 2016 CFMS Show in Placerville. No one has come forth to host the 2015.

The CFMS Dues and Insurance fee has not changed. It is still \$8.00 per member as of 1/1/2014. We were also reminded to have our Treasurer respond to California and IRS with their annual paperwork.

Jo Anna Ritchey
CFMS Director

Torbernite ...It's Radioactive ...and It Shows!

This wonderful miniature torbernite specimen pretty much announces its radioactive nature with its unnatural green color. A second clue that this piece is radioactive is the dark smoky quartz crystal nearby. Some quartz gets a smoky color from minute air bubble inclusions, but many times quartz gets its smoky color from exposure to radiation at some point in its past.

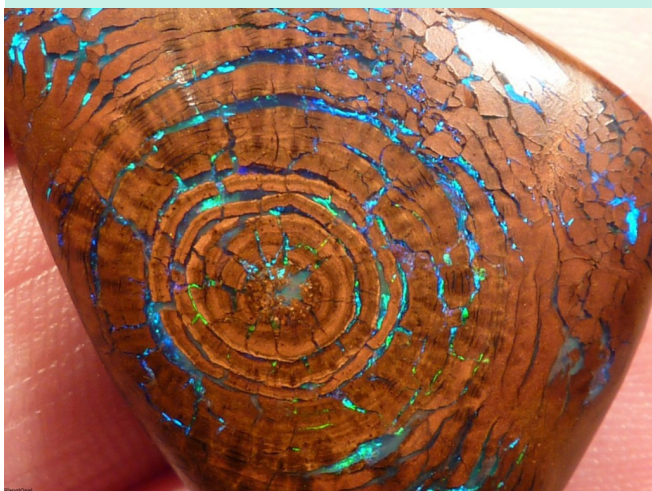
<http://www.mineralcalendar.com/php/facts.php> via Rollin Rock



Go see a CFMS Show this December!

December 13 - 15: SAN BERNARDINO, CA Orange Belt Mineralogical Society Western Regional Little League Ball Park 6707 Little League Drive Hours: 9 am to Dusk daily Contact: Ken, (909) 381-0089
Email: kengard@roadrunner.com Website: <http://OBMSrocks.yolasite.com>

Geology Picture – Opal Replacing Tree Rings This picture was published November 12, 2013, by Mihai Andrei, on the ZME Science website, at URL: <<http://www.zmescience.com/other/geopicture/geopicture-of-the-week-tree-fossil-with-opal-growth-rings/#si4TosZBC8ZeWdJK.99>>, with the following description: "This is a part of an opalized tree, and the rings you see are actually tree rings; or at least they were. This is an very rare sample: opal can be fairly common in petrified wood, but this is a fire opal, which makes it so much more valuable. Fire opals are transparent to translucent opals with warm body colors of yellow, orange, orange-yellow or red – basically, it often has pretty colors. So how did this magnificent opalized tree come to be? Initially, water filled the cracks and empty spaces of the source fossil, and the silica content in the water hardened and turned into opal or chalcedony. Pottery Shard Brooch - A nostalgic keepsake from a broken dinner plate , By Julie Jerman-Melka This project was originally published in the May 2009 Lapidary Journal jewelry Artist magazine. Julie provides step-by-step instructions for creating a silver pin using a broken pottery shard. To download the article, with photographs of the process and finished piece, turn your web browser to URL: via Lapidari-



West Coast GEM & MINERAL SHOW - SPRING

MAY 16 - 18, 2014

Holiday Inn Orange County Airport
2726 S. Grand Ave.

Santa Ana, CA 92705

(Take 55 Fwy exit 8 for Dyer Rd. to S. Grand Ave.)

80 Top Quality Dealers!

Minerals • Fossils • Gemstones
Jewelry • Beads • Decorator Pieces
Meteorites • Lapidary • Metaphysical



Colorado Topaz - Photo by Jeff Scovil©

Show Hours:

Fri. & Sat. 10 - 6 • Sun. 10 - 5

www.mzexpos.com

FREE ADMISSION • FREE PARKING
WHOLESALE • RETAIL
OPEN TO THE PUBLIC

Suiseki



Huntington Library

Viewing Stones Show

Dec. 26-Jan. 2, 2014 General admission;
Botanical Center

Thursday-Thursday (**Closed Wednesday, Jan. 1**)
10:30 a.m.-4:30 p.m.

The California Aiseki Kai presents its 24th annual show featuring more than 100 outstanding examples of suiseki and other viewing stones. A centuries-old art form in Asia that is gaining popularity around the world, viewing stones invite contemplation of their subtle, fanciful forms, shaped by nature, the elements, and time. General admission. Botanical Center.